



Russell Technologies India Pvt. Ltd.  
C – 2/290, Sec – F, Jankipuram, Lucknow -226021 U.P. India  
Telefax - +91 – 0522 - 4027541; Mobile: +91- 9450760411  
[www.russelltech-india.in](http://www.russelltech-india.in); [info@russelltech-india.com](mailto:info@russelltech-india.com)

## Surface Roughness Tester Leeb430



## Functions & Features

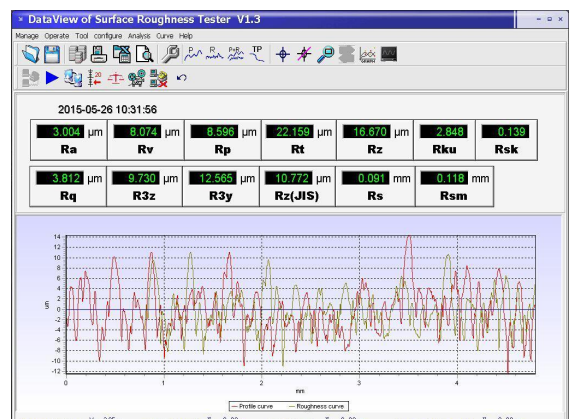
- 28 Measuring parameters;
- Adopt 320µm high accuracy inductance probe;
- Four filter methods of RC, PC-RC, GAUSS, D-P ;
- Adopt 2.7 inch 128×64 dot OLED display,without back-light and dead spot. Capable of showing all parameters, profile graph and Chinese/English menu;
- Adopt the most popular DSP chip to control and process data;
- Build-in storage can memorize 20 sets of complete measurement data;
- External SD Card can expand mass data storage;
- Build-in wireless remote control module to remote control measurement;
- Build-in Bluetooth module can be connected with the Bluetooth printer to print all the parameters and profiles;
- Build-in Micro-USB port, connecting with PC for reports and data analysis by software;
- Build-in lithium-polymer rechargeable battery and charging protection circuit;
- Mechatronics design, smaller and portable to carry;
- Automatic shut down for power saving, each operation step has a hit message;
- Full accessories, options for curve surface probe, deep groove probe, small hole probe, tiny hole probe, tooth surface probe, small pillar, height adjust platform, extension bar, lateral transfer rod etc.
- Application: for measure the surface roughness of plane,hole,slope,cone or outer cylindrical surface etc.

## Technical Parameters

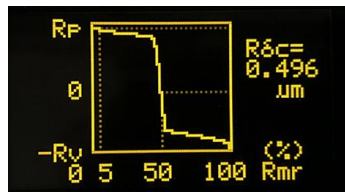
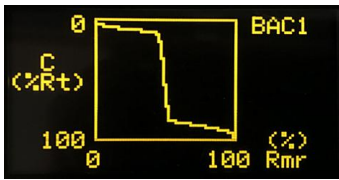
<b>Model</b>	<b>Leeb430</b>
Measurement range	Z Axis(Vertical)320μm(Ra=80μm),X Axis(Horizontal)17.5mm
Resolution (Z Axis(Vertical))	0.001μm/±20μm, 0.002μm/±40μm, 0.004μm/±80μm, 0.008μm/±160μm,
Parameters	Ra、Rq、Rz、Rt、Rp、Rv、RS、RSm、Rz(JIS)、Ry(JIS)、Rsk、R3z、Rmax、R <sub>pc</sub> 、R <sub>mr</sub> 、R <sub>ku</sub> 、RΔa、RΔq、Rδc、Ry、Rk、Rpk、Rvk、Mr1、Mr2、A1、A2、V0
Stansard	ISO, CE,FCC, ANSI, DIN, JIS
Measuring Project Graphics	Roughness Profile,Bearing ratio curve,Direct profile
Wave Filter	RC,PC-RC,Gauss,D-P
Sample Length(lr)	0.25,0.8,2.5mm
Assessment Length(ln)	Ln= lr×n,n=1~5
Sensor Measurement Principle	Displacement differential inductance
Sensor Stylus	Natural Diamond,90 cone angle, 5 μm tip radius
Sensor measured force	<4mN
Sensor guide head	Ruby, Longitudinal radius 40mm
Sensor traversing speed	Lr=0.25,Vt=0.15mm/s Lr=2.5,Vt=1mm/s
Accuracy	<=±10%
Repeatability	<=6%
Power Supply	Built-in Lithium ion battery, AC adapter 8.4V,800mA
Dimensions	112×50×47mm
Net weight	About 360g

●Bluetooth Control Device for Wireless Control and Print

●Software: Data Communication



## Graphic representations



## Standard Configuration

Name	Quantity	Name	Quantity
Main Body	1	SD Memory card	1
Standard sensor	1	Power adapter	1
Calibration Block	1	Straight screwdriver	1
supporting platform	1	Manual	1
Height bracket	1	Certificate	1
Sensor Protector	1	Warranty card	1
Remote controller	1	Instruments case	1

## Standard Accessories



Russell Technologies India Pvt. Ltd.

C – 2/290, Sec – F, Jankipuram, Lucknow -226021 U.P. India

Telefax - +91 – 0522 - 4027541; Mobile: +91- 9450760411